

# Pope Model WFC 600 Wiped-Film Still



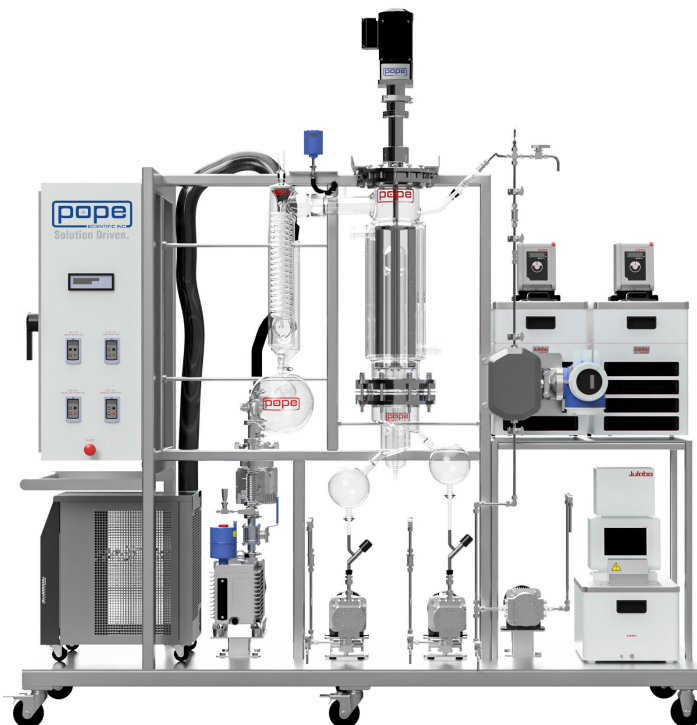
## CE-CERTIFIED WIPED-FILM DISTILLATION SYSTEM FOR HEAT SENSITIVE MATERIALS

This turnkey package is a portable molecular (short path) still and evaporation system for high-performance pilot and production processing in a wide range of demanding applications. The CE Certification covers the overall system, not just individual components. Glass model provides throughputs up to 10 kg/hr, in optional SS, up to 25 kg/hr, application dependent. Backed by Pope's wealth of technical support and unparalleled customer care and service!



### KEY FEATURES:

- Fully CE-Certified as a total system. CE-Certified and cUL-listed electrical components throughout
- Single point power connection
- Robust design with stainless steel mobile skid system
- Wetted parts are certified borosilicate glass, 316L SS, Teflon, and Viton (Alternate materials are available)
- High integrity components and fittings assure high vacuum, leak-free operation.
- Each system made is fully tested; comprehensive documentation and manuals provided
- Feed pump and feed/degasser flask standard for WFC 600 model
- Vacuum sensor mounted at still body rather than vacuum pump inlet for best accuracy and usefulness.
- Precision-controlled metal band heating standard, hot oil jacket heating alternate available.
- Internal condenser for molecular distillation, optional external condenser for evaporation/concentration. Both may be operated cold or at elevated



### OPTIONAL PACKAGES:

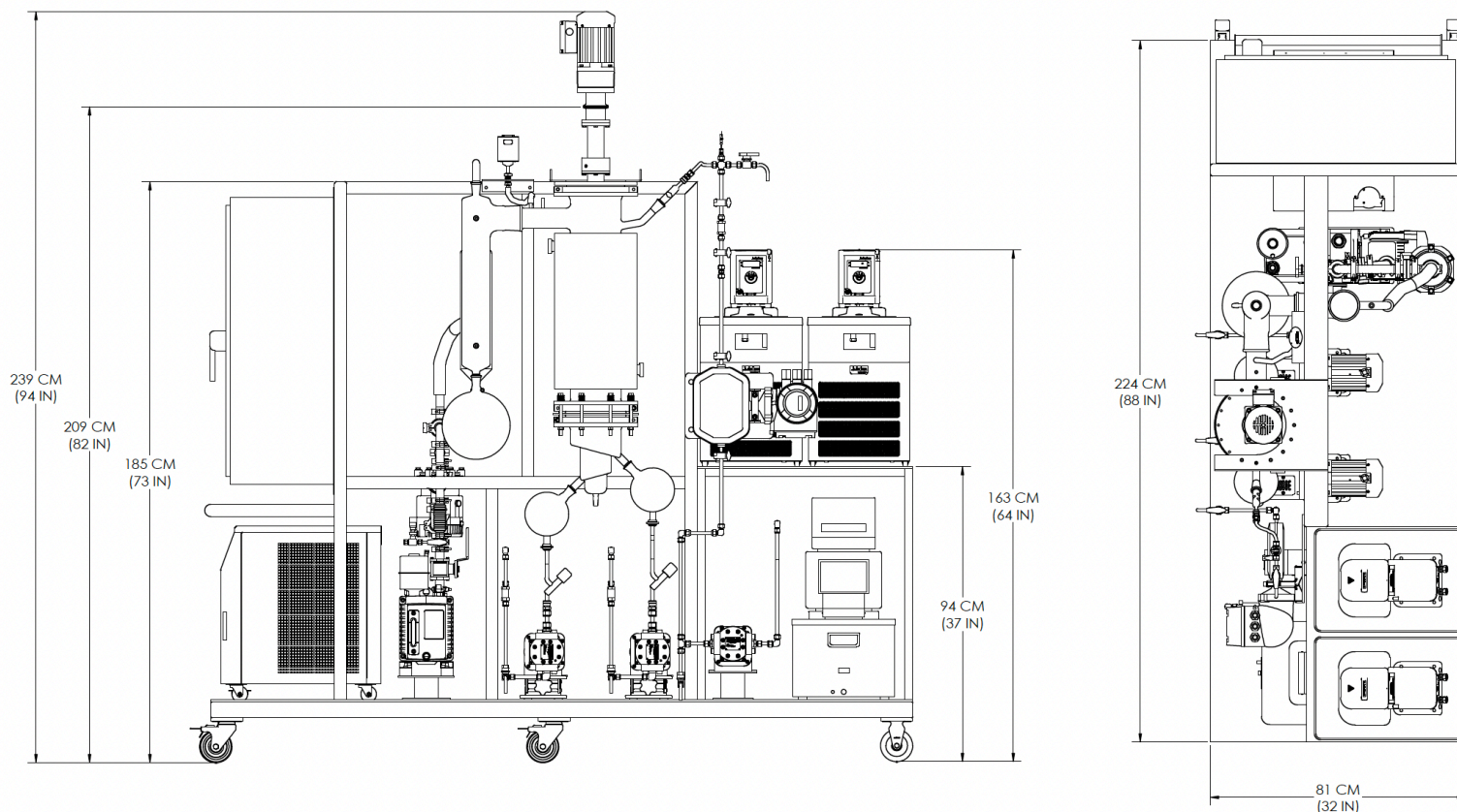
- Distillate and residue discharge pumps
- 316L Stainless steel body & internal condenser package to replace glass
- Hot oil body jacketing and heating package to replace electric band type
- Heat tracing for viscous and higher melting point materials
- Vacuum booster pumps
- Coriolis flow meters for accurate feed rate measurement
- Options for various elastomers (FKM, EPDM, FFKM, others)
- Feed and receiving vessels of various sizes
- Customization including specialized automation and multistage systems available

60 YEARS OF SERVICE TO SCIENCE & INDUSTRY

+1-262-268-9300 | WWW.POPEINC.COM | USA MADE | SALES@POPEINC.COM

# Pope WFC 600 Wiped-Film Still System

## DIMENSIONAL DIAGRAM:



## GENERAL SPECIFICATIONS:

Rev. 2, 11/2024

Footprint	224 cm W x 81 cm D x 239 cm H (88" x 32" x 94") Height clearance reduces to 209 cm (82") with quick-connect drive motor removed.
Electrical	3-phase 400VAC, 60A FLA. (Alternate power compatibilities available)
Warranty	Limited 1 year warranty
Feed Rate	1-10 kg/hr with glass body and condenser, 2-25 kg/hr with 316L SS
Heated Body Section / Internal Condenser surface areas	0.22m <sup>2</sup> (2.35 ft <sup>2</sup> ) / 0.33m <sup>2</sup> (3.77ft <sup>2</sup> )
Evaporator diameter	6"
Ultimate vacuum (clean and dry)	0.008 to 0.02 Torr (0.001 Torr with booster pump option)
Internal condenser circulator range	-35°C to +150°C
Immersion chiller operating temperature	-80 to -60°C



CE marked and certified in conformity with EU health, safety and environmental standards within the European Economic Area and other regions where CE is required. Certification follows pertinent directives and covers the equipment as a whole system in addition to individual components.