



Pope Mixers: Powerful, Reliable, Versatile





Pope Mixers for Demanding Applications

- Pharmaceuticals
- BioTech
- Foods & Flavors
- Cosmetics
- Polymers
- High purity speciality chemicals
- General processing and R&D
- Many others



Interchangeable



Adaptable



Application Optimized

Pope Mixers – Quality & Versatility

Since 1986, Pope Scientific mixers have been noted for their ruggedness and versatility in a wide range of demanding applications. All feature robust design, top quality materials, precision fabrication, and are fully pretested over their entire operating range. For even greater flexibility, motors, shafts and impellers can be completely interchangeable.

Regardless of the model and configuration you choose, you can be confident your Pope mixer will deliver the performance your application demands – and the reliability you expect.

Series 800 Mixer

The high-performance Series 800 mixer is designed for the most demanding applications, such as strict sanitary, temperature and pressure/vacuum extremes, high chemical compatibility and other uses. You may specify the type of motor (electric, air, explosion proof) you want, various optional seals, even your choice of impeller types.

Series 600 Mixer

The compact Series 600 mixer is the ideal choice for those less demanding applications and where space is at a premium. As with all Pope mixers, you may select from a wide range of motors, seals, impellers and other options to match your exact application needs.

Series 800 Mixer Specifications

Wetted Material	316-L stainless steel, Hastelloy C-276, other alloys – Teflon/other coatings available
Vessel Connection	3" sanitary clamp standard – 150 lb flange mount, others available
Bearings	High temperature, permanently lubricated. Double row lower, single row upper
Shaft	3/4" diameter, standard or detachable "pool cue" styles
Impeller	Marine type standard. Turbine, hydrofoil, Cowles, anchor, paddle, others available per application (mounted with set screws or welded, ground and polished)
Motor Mount	Standard or quick removal type (for autoclaving, etc.)
Motors	Electric: <ul style="list-style-type: none"> • 1/3, 1/2, 3/4 hp DC variable speed • 1/4, 1/3, 1/2, 3/4 hp DC gearmotor (choice of speed ranges) • Others per application (including explosion proof, AC) Air: <ul style="list-style-type: none"> • 3/4, 1-1/2 hp variable speed (200-800 rpm) • 1/4, 1 hp variable speed gearmotor (30-300 rpm) • Others per application
Cooling	Teflon lip seal to protect ball bearings. Two coolant side ports.

Seal Specifications

Version	Type 8 balanced, single, dry-running mechanical seal (double mechanical and other types available)
Materials	316 stainless standard (Hastelloy available) Viton elastomers (Kalrez, others per application) Carbon primary ring, tungsten carbide mating ring
Max Operating Spd	800 rpm – optional tachometer available (recommended operating speed)
Max Seal Pressure	Full vacuum to 120 psig (dry running), 150 psig (wet running)
Seal Lubrication	Dry (can be wetted - see "Cooling" above)
Operating Temp	-40° F to 300° F
Seal Life	3000 hours minimum (estimated)

Series 600 Mixer Specifications

Wetted Material	316-L stainless steel
Vessel Connection	2" sanitary clamp standard, others available
Shaft	1/2 diameter (detachable "pool cue" type available)
Impeller	Marine type standard. Turbine, hydrofoil, Cowles, others available per application (mounted with set screws or welded, ground and polished)
Motor Mount	Standard or quick removal type (for autoclaving, etc.)
Motors	Electric: <ul style="list-style-type: none"> • 1/4, 1/3, 1/2 DC variable speed • 1/8, 1/4, 1/3 hp DC gearmotor (choice of speed ranges) • Others per application (including explosion proof, AC) Air: <ul style="list-style-type: none"> • 3/4 hp variable speed (200-800 rpm) • 1/4 hp variable speed gearmotor (30-300 rpm) • Others per application

Seal Specifications

Version	Type 6 single, dry-running mechanical seal
Materials	18-8 stainless hardware Viton elastomers (Buna, EPDM available) Carbon primary ring, ceramic mating ring
Max Operating Spd	800 rpm – optional tachometer available (recommended operating speed)
Max Seal Pressure	75 psi (not rated for vacuum use)
Operating Temp	-20° F to 240° F
Seal Life	5,000 hours (estimated)

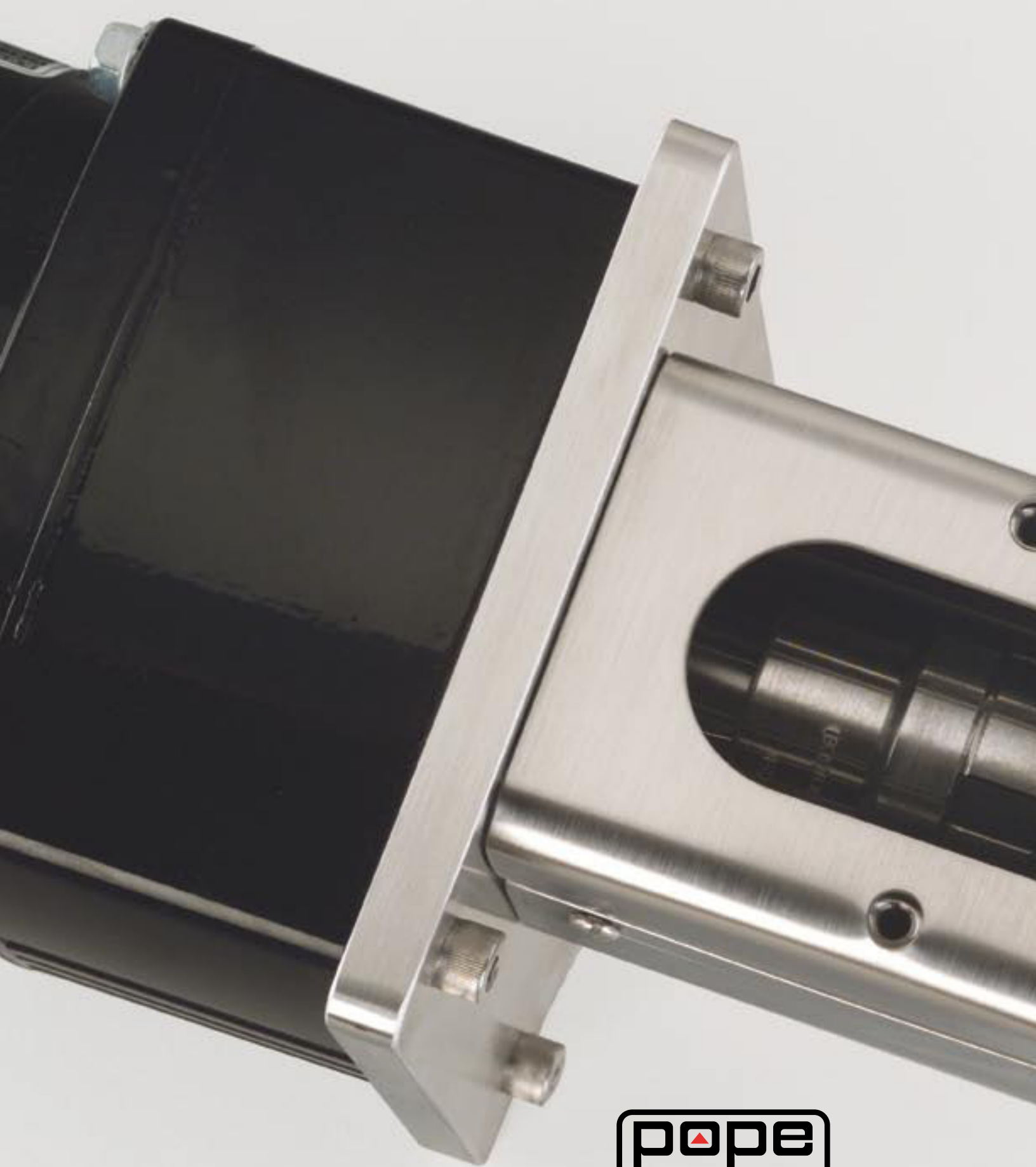


Pope Scientific – Total Solutions

Pope's Mixers have been proven and utilized in many industries. They were first offered as accessories to Pope's Portable Pressure Vessels and Process Vessel Systems product lines. Now, they are also available as stand alone mixer units for various existing vessels in sizes ranging from 2 to 2000 liters.

We can provide more than a mixer. We offer complete turnkey mixing systems, blenders, dispensers, reactors, fermenters, transfer and process vessels. Additionally, Pope offers skid mounted processing stations with full instrumentation and controls. In such systems, the mixer is optimized and integrated with other system components to allow for greatest efficiency.

Pope Scientific's ability to work with a wide range of customer applications means you get the technology, equipment and services at one source. Consult with our experienced staff about your special application. We will carefully assess your needs to determine the most appropriate solution.



Pope Scientific Inc.

351 N Dekora Woods Blvd. • P.O. Box 80018 • Saukville, WI, 53080, USA
Phone: +1 – 262-268-9300 • Fax: +1 – 262-268-9400
Corporate Capabilities and others: info@popeinc.com
Dewars: dewars@popeinc.com • Web: www.popeinc.com